



Karen Culpepper  
President

## PRESIDENT'S REPORT

### ***As in the years and decades past, co-op efforts to educate rural America about***

electricity continues, with a renewed passion for safety, efficiency and environmental impact. Now, though, the venues are changing. A one-room class setting or a community room full of neighbors may be on the agenda, but our audience is also anywhere outside of the walls, behind computers, tablets, iPhones and other devices. As these changes have taken shape, TREWA's goal is to keep informing our members and others about issues ranging from governmental matters affecting cooperatives, energy conservation ideas and tips and electric safety tips. These topics have been, and remain, the organization's call to action.

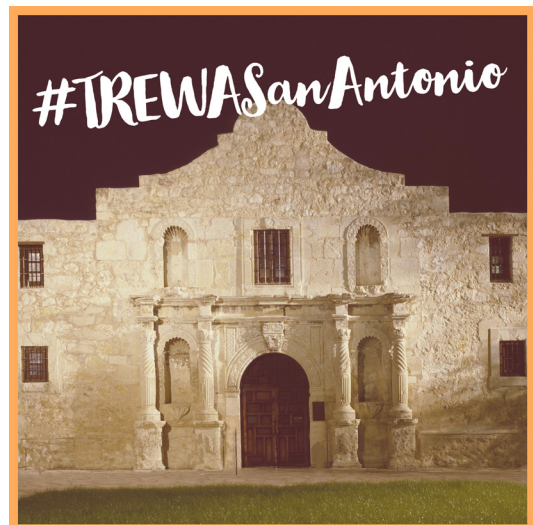
One avenue that assists in meeting these needs is our fundraising efforts during the TEC Annual Meeting each August. The funds that TREWA works to raise support are our Rural Friends/ACRE governmental effort, scholarships and sponsorship of the Government-in-Action Youth Tour program.

We will gather in San Antonio August 5-8, 2018, for the annual meeting. You will find the TREWA group busily working to raise funds to support our programs, gather new members, renew past memberships and continue to tell the cooperative story. You may join or renew your membership online at [TREWA.org](http://TREWA.org) or, if you attend the meeting, you may visit our booth. You may also help in the fundraising

efforts by donating a silent auction item or an arts and craft item. The items donated to the Silent Auction and Arts and Crafts booth come from those generous and talented individuals that so graciously support TREWA.

Our sponsors and vendors also support TREWA, donating to our VISA card raffle as well as our cooperative groups from across the state donate raffle items to help raise funds.

The one-room classroom now is the World Wide Web and even with this change, the core foundation of TREWA will remain the same. As we prepare to stroll the Riverwalk or waltz our way around San Antonio, we hope you are able to attend the 2018 TEC Annual Meeting, drop by and visit the beautiful "yellow roses of Texas" at the TREWA booths.

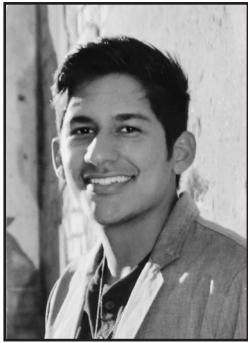


The  
**FUTURE** IS  
**YOURS**



**CONGRATULATIONS TO THE TREWA  
 SCHOLARSHIP WINNERS**

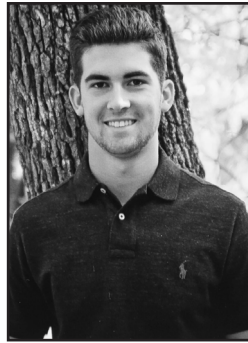
**AUSTIN GOMEZ** • *Trinity Valley EC* • Kaufman  
**BRYCE STOKES** • *Tri-County EC* • Azle  
**COOPER HOLLAND** • *Wise EC* • Decatur  
**JENTRY WALL** • *South Plains EC* • Lubbock  
**JOCELYN BACA** • *Deep East Texas EC* • San Augustine  
**JODI TOLER** • *Wise EC* • Decatur  
**KAITLYNN BIRKES** • *Heart of Texas EC* • McGregor  
**KALEIGH PETERSON** • *North Plains EC* • Perryton  
**KATELYN PEGGRAM** • *Lamb County EC* • Littlefield  
**MATTEO HINOJOSA** • *Magic Valley EC* • Pharr  
**MEAGAN FAILS** • *Lyntegar EC* • Tahoka  
**MEAGAN SMITH** • *Jasper-Newton EC* • Jasper  
**RANDALL WOYTEK** • *San Bernard EC* • Bellville  
**ROBERT ALBIN** • *Southwest Texas EC* • Eldorado  
**SARA MARTIN** • *CoServ* • Corinth  
**SERENA AYALA** • *Lyntegar EC* • Tahoka  
**SILAS SONNENBERG** • *South Plains EC* • Lubbock  
**TARYN HUFFAKER** • *Lyntegar EC* • Tahoka  
**TAYLOR LOEFFLER** • *Hamilton EC* • Hamilton  
**TREVOR HUGHES** • *Houston County EC* • Crockett



AUSTIN  
GOMEZ



BRYCE  
STOKES



COOPER  
HOLLAND



JENTRY  
WALL



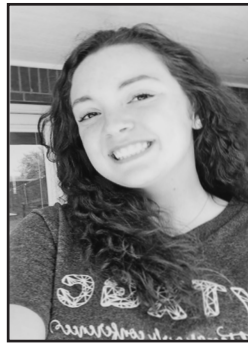
JOCELYN  
BACA



JODI  
TOLER



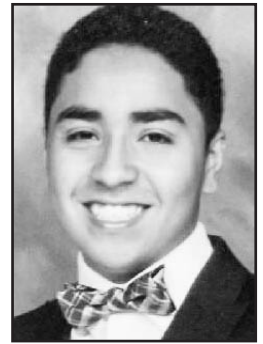
KAITLYNN  
BIRKES



KALEIGH  
PETERSON



KATELYN  
PEGGRAM



MATTEO  
HINOJOSA



MEAGAN  
FAILS



MEAGAN  
SMITH



ROBERT  
ALBIN



RANDALL  
WOYTEK



SARA  
MARTIN



SERENA  
AYALA



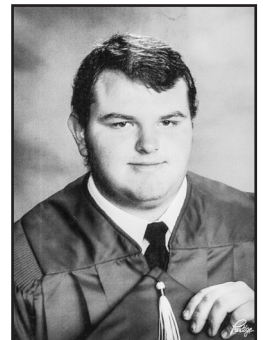
SILAS  
SONNENBERG



TARYN  
HUFFAKER



TAYLOR  
LOEFFLER



TREVOR  
HUGHES



# "Trip of a Lifetime"

## 2018 Youth Tour: T-Shirt Trek from Austin to D.C.



### TEAL DAY

- Austin Capitol
- Botanical Gardens



### PURPLE DAY

- Landed in D.C.
- Newseum



### NAVY BLUE DAY

- Museum of the Bible
- Wreath Laying Ceremony at the Tomb of the Unknown Soldier





**RED DAY**

- Devotional
- George Washington's Colonial Manor, Mount Vernon



**TEXAS DAY**

- White House
- Roosevelt & Jefferson Memorials



- POLO DAY**
- Capitol Hill
  - Meet & Greet with Texas Reps



**GREEN DAY**

- National Cathedral
- Memorials







## **MAROON DAY**

### Farewell Celebration



TREWA's mission is not only to continue to educate our members about the rural electrification program but to support raising up new leaders. The annual fundraising efforts in August support TREWA's donation to the Youth Tour program, which assisted in providing the colored shirts worn by all participants during the tour. The Texas Youth Tour delegation stands out in their matching T-shirts as they make their way through the nine day "Trip of a Lifetime."

## **2018 Youth Tour by the Numbers:**

**Millions** of Pictures  
**1,320** T-Shirts  
**25+** Scheduled Visits  
**15** Chaperons  
**9** Days  
**3** Charter Buses  
**1** Rural Youth Rally  
**Endless** Life-Long  
 Memories



# TEC 78TH ANNUAL MEETING HIGHLIGHTS

WE HOPE THAT YOU WILL JOIN US IN SAN ANTONIO!

MONDAY-WEDNESDAY, AUGUST 5TH-8TH

- VISIT AND SUPPORT TREWA ACTIVITIES & TEC SHOWCASE
- ENJOY THE SIGHTS, SOUNDS AND TASTES OF SAN ANTONIO

## Tuesday, August 7th

7:00 A.M. *TEC Membership Breakfast Buffet*

10:10 A.M. *TREWA Membership Meeting and Spouse Program*  
Who Hijacked My Fairy Tale? - Kelly Swanson, Comedian & Author

11:30 A.M. *Rural Friends/ACRE Membership Luncheon*

6:00 P.M. *An Evening at the Buckhorn Saloon & Museum*  
Join us for dinner, music, history and more. This kid-friendly venue features rare animals, circus memorabilia, Texas Rangers artifacts, a shooting gallery and amazing photo opportunities.

## Wednesday, August 8th

10:20 A.m. *Riding for the Brand:  
The Power of Purposeful Leadership*

Jim Whitt might be best described as a cross between Dr. Phil and Jeff Foxworthy. He makes people think and laugh - at the same time. His unique brand of humor draws on his rural roots and a lifetime of working in the cattle industry. He has developed a unique approach to personal and organizational development that revolves around his basic tenet of human behavior: Without a purpose, our only motivation is reward and punishment. His purpose in life is to help people reach their full potential and their purpose.



### FIVE TIPS FOR SAVING ENERGY AT HOME

- 1 Set a programmable thermostat to turn down the heat when the house is empty or everyone is asleep.
- 2 Insulate your electric water heater.
- 3 Plug leaks around windows, doors, and power outlets with caulk and weather stripping.
- 4 Purchase ENERGY STAR® products.
- 5 Monitor your energy use to spot trends and sudden changes.



## Top Electrical Tips

1. Have all wiring checked by a professional electrician
2. Maintain electrical wiring in all buildings
3. Do not use frayed power cords
4. Be aware of electrical shorts in poorly grounded tools
5. Stay away from dusty or wet environments when working with electricity
6. Avoid power lines when operating machinery



### Energy Saver 101: Everything You Need to Know About

# Home Cooling

6%

The percentage of the average household's energy use that goes to space cooling.



2/3 of all U.S. homes have air conditioners.

\$11B

The amount it costs homeowners every year to power their air conditioners.

### #DidYouKnow:



You can reduce air conditioning energy use by 20-50 percent by switching to **high-efficiency air conditioners** and taking other actions to lower your home cooling costs.

### ENERGY-SAVING TIP:

*The quickest way to save energy on home cooling is to regularly clean and replace your cooling unit's filters.*



# Cooperative History Series

**As linemen were rolling out new electrical lines to rural America in the 1930s and 40s,** there was certainly a lot excitement for homeowners to have light at the flip of a switch. However, educating consumers about the many other possibilities that came with electric service was a major task. The Rural Electrification Administration mobilized a group of ladies to show just how great electricity could be.

History.com has an interesting article (excerpted below) showing how it worked.\*

*Farming families in Buckingham County, Virginia crowded into the tent, peering eagerly at the spectacle in front of them. It wasn't a political meeting, or a church revival—it was a turkey-cooking contest, and it riveted the crowd.*

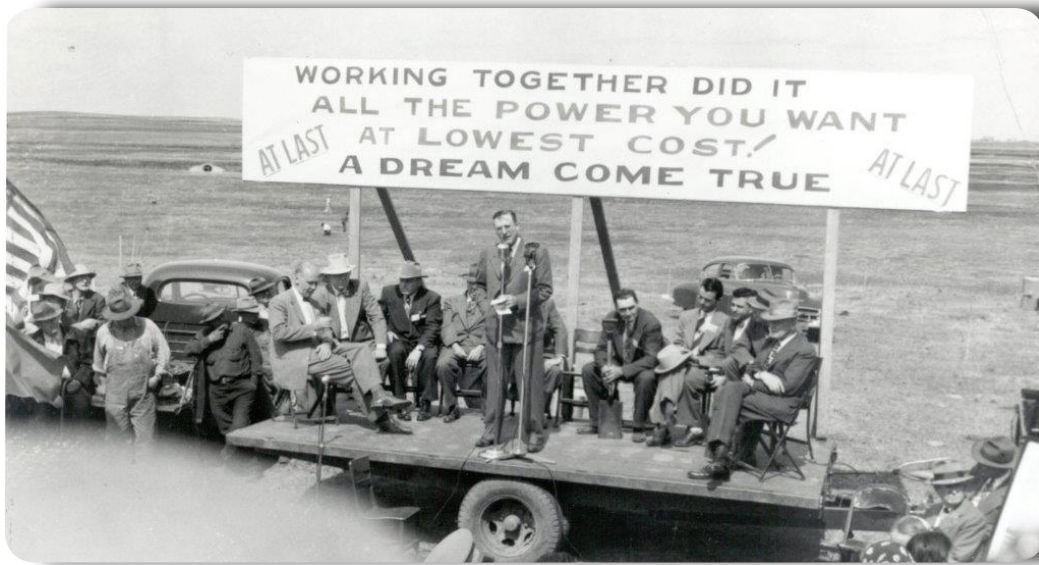
*The turkeys weren't the center of attention at the event—but the stove was. Powered by electricity, it must have fascinated attendees during the 1940 event. The wood-fired stoves they used in their kitchens depended on backbreaking physical labor and presented a real fire danger. In contrast, this stove could be turned on and off at will, required little pre-heating, and didn't need a stick of wood. It cooked food more quickly and consistently, too.*

*The attendees were soon to get electricity of their own as part of the Rural Electrification Administration (REA), a sweeping New Deal program designed to plug farmers in to the American economy. In 1935, ninety percent of rural homes in the United States didn't have electricity, and the REA intended to change that.*



*To do so, it needed to help rural people understand electricity. The REA recruited a group of mostly female workers who crisscrossed the nation in what they called an “electric circus”—a series of traveling events designed to orient Americans to the life-changing possibilities of electrification. Workers included women like Louisan Mamer, an electrification agent who spent hours trying to convince wary farmers' wives that they needed electric power in their kitchens and barns.*

*Mamer hosted cooking contests, showed off the labor-saving power of refrigerators, toasters and vacuums, and read the testimony of farm women who had already gone electric. “[Electricity] saves my food, my time, my energy, my money, and most of all my disposition,” read one of Mamer's favorite testimonials.*



*For rural people who didn't have electricity in their homes, electrification wasn't just power lines or outlets. It meant the strange, often jaw-dropping experience of going from a home with outdated, hand-powered technology to one that seemed to do its own chores, light its own rooms, and allow for modern miracles like washing machines and radio.*

*Many people remembered the day the lights turned on for the rest of their lives, including Pearl Yates, a North Carolina farmer's wife who first got electricity in 1939. She was so amazed by her home's new lights that she walked from room to room with her small children, taking it all in. "We'd stop and look and they were so pretty and we'd go look at another room and another room," she recalled in an oral history.*

Fast forward to our electrified lifestyles of today and you still find TREWA members traveling throughout the state, educating the public about the importance of rural electrification and keeping the lights on.

\*Excerpted from "These Women Taught Depression-Era Americans to Use Electricity," by Erin Blakemore  
<https://www.history.com/news/new-deal-great-depression-rural-electrification>





# Silent Auction & Craft Donation

**YES!** I will donate a Craft/Art Item

Name \_\_\_\_\_

City, State, Zip \_\_\_\_\_

Item Donated \_\_\_\_\_

Item Value \_\_\_\_\_

If you are unable to attend the meeting, please designate someone to bring your item for you. \_\_\_\_\_

To send a craft item or make a donation to TREWA, please mail it to Bobbi Byford, Trinity Valley EC, P.O. Box 888, Kaufman, TX 75142. You can also give your craft or silent auction item to any TREWA board member. Again, thank you for your continued support.

Your donated items help provide funds for TREWA scholarships and donations to Rural Friends/ACRE.

## 2017-18 TREWA Board of Directors

**Group 1**

Ann Horn  
Arts & Crafts  
Jasper-Newton EC  
(409) 423-2241  
ext. 120 • ahorn@jnecc.com



**Group 2**

Kendra Markwardt  
Scholarship Chair  
HILCO EC  
(254) 687-2331  
ext. 1145 • kmarkwardt@hilco.coop



**Group 3**

Karen Culpepper  
President  
Wise EC  
(940) 626-3003  
kculpepper@wiseec.com



**Group 4**

Rachel Ford  
Vice-President  
Comanche EC  
(325) 356-2533  
rford@ceca.coop



**Group 5**

Jana Bishop  
Lyntegar EC  
(806) 470-9270  
jbishop@lyntegar.coop



**Group 6**

Christina Martinez  
Membership Chair  
Bluebonnet EC  
(512) 332-7924  
Christina.martinez@bluebonnet.coop



**Group 7**

Priscilla Burgos  
Secretary/Treasurer  
Victoria EC  
(361) 573-2428  
pburgos@victoriaelectric.coop



Kathy Shipp  
Past President  
Lamb County EC  
(806) 385-5191  
kshipp@lcec.coop



Bobbi Byford  
Social Media  
/Lamplighter  
Trinity Valley EC  
(469) 261-9876  
bobbi@tvec.coop



*"When one door of happiness closes, another opens; but often we look so long at the closed door that we do not see the one which has been opened for us."*

- Helen Keller

# TREWA MEMBERSHIP

## Current memberships expire July 31, 2018.

### TREWA MEMBERSHIP FORM

Membership valid August 1, 2018, through July 31, 2019.

Membership:  Renewal  New Member

#### Membership Fees

Please check the appropriate dues assessments:

\$10 (1 year)  \$20 (2 years)

First name \_\_\_\_\_

Last name \_\_\_\_\_

Address \_\_\_\_\_

City \_\_\_\_\_

State \_\_\_\_\_ ZIP \_\_\_\_\_

Home phone \_\_\_\_\_

Work phone \_\_\_\_\_

Email \_\_\_\_\_

Cooperative (spell out) \_\_\_\_\_  
\_\_\_\_\_

#### Relationship to cooperative:

Employee  Director  Member  
 Spouse of Employee  Spouse of Director  Other

#### Return to:

Mail: TREWA  
Christina Martinez  
Membership Chair  
1122 Colorado St., 24th Floor  
Austin, TX 78701

Email: christina.martinez@bluebonnet.coop



The TREWA Board of Directors thanks you for your continued support of this organization.

TREWA membership is open to men and women of rural electric cooperatives. We encourage you to become a part of our growing organization as we continue to light the lamp of knowledge for the future.

Membership has its privileges. The children of TREWA members are eligible to apply for scholarships sponsored by TREWA. Members also receive an edition of The Lamplighter, which is sent twice a year via email.

Regular membership price is \$10 per year and, to date, we have almost 1,000 members. Once again, TREWA is offering membership at \$5 per person to cooperatives that enroll 100 percent of their directors, directors' spouses and employees (or spouse of an employee). We would like to acknowledge and thank the cooperatives that currently have 100 percent membership:

- Comanche EC, Group 4
- CoServ Electric, Group 3
- Heart of Texas EC, Group 2
- Houston County EC, Group 1
- North Plains EC, Group 5
- Taylor EC, Group 4
- Tri-County EC, Group 3

Renew your membership today by completing and returning the form at right. TREWA membership forms are also available at [trewa.org](http://trewa.org).