

The Lamplighter

TEXAS RURAL ELECTRIC WOMEN'S ASSOCIATION

JUNE 2017



Kathy Shipp, President

President's Message

Keep TREWA Weird

History, arts, nature and recreation are just a few pieces of what make Austin unique. Culturally and artistically Austin can be seen as simply normal to absolutely weird. TREWA

celebrates the fact that Austin, our capital city, puts the pizzazz, the bling and the quiriness into one awesome experience. You can have this experience and more as you pack your bags and join TREWA in August at the TEC Annual Meeting at the Renaissance Hotel, in Austin, Texas, August 6–9.

TREWA will be helping to Keep Austin Weird at this year's TEC Annual Meeting and the TREWA Annual Membership Meeting. Plans and preparations are underway for our annual membership meeting. The Arts and Crafts Sale, Silent Auction, Group Raffles, Visa Raffle and Membership Drive/Renewal are a part of the activities that take place during TEC Annual Meeting.

As history is a record keeper of facts and events, TREWA's history began with some very wise women on a mission, which might have at times seemed odd or weird to some, to educate everyone about the importance of rural electrification. Our mission has always been to educate and create interest in rural electric cooperatives and issues. Our membership includes boards of directors, managers, cooperative employees, cooperative members and anyone that supports the growing efforts of this organization. TREWA now has over 1,000 members and is growing. Membership is a great way to support this mission that focuses on programs like the scholarships, Youth Tour and Rural Friends/ACRE.

TREWA's Arts and Crafts fundraiser gives each of us an opportunity to purchase homemade, handcrafted or

redesigned items. All the beautiful and unique items donated are given by the gifted and talented members. We know there are an enormous number of talented individuals out there and we encourage everyone to contribute your talents and efforts to our arts and crafts booth. If you are unable to attend and would like to participate by donating an item, please complete the form located on Page 4.

Other fundraising tools are the Silent Auction, Group Raffles and Visa Raffle for attendees to take part in during the meeting. The sales have allowed us to fund the TREWA Scholarship Program, T-Shirts for the Government-in-Action Youth Tour, and the political advocacy effort, Rural Friends/ACRE. We are so grateful to each and every one of you who chose to participate and are members of TREWA.

With a heart of gratitude as big as our great state we want to say thank you to each of you for making it possible to present 20 \$1,500 scholarships to students throughout the state (see Page 2 for the winners). This year there were 84 applicants and as you can imagine, the judges had a very difficult time selecting only 20 recipients. If by chance you were an applicant and did not get selected this year, please apply again next year. The support of our membership is the driving force in the ability to provide these scholarships and the many other entities that receive funds from TREWA.

Our membership meeting will be Tuesday, August 8, 2017, at 10 a.m. The program this year is presented by Holly Hoffman, CBS Survivor Nicaragua. Holly will share her story, Never Give Up—The Survivor Way.

So ladies and gentlemen, we dare you to join us in Austin and help TREWA in our efforts to Keep Austin Weird and may we add—wonderful. You also can leave Austin a winner from one or more raffles, a winner of one or more silent auction items, or the owner of a new unique craft item. We dare you.



In This Issue: Scholarship Winners Page 2 TEC Annual Meeting Activities Page 3
Donations Needed for Silent Auction, Art and Crafts Sale Page 4 Membership Renewals Page 5

From ABCs and 123s to Scholarship Recipients Going for Degrees!



Kailynn Virag
Denton
CoServ EC



Bryant Castro
Olney
Fort Belknap EC



Morgan Montgomery
Olney
Fort Belknap EC



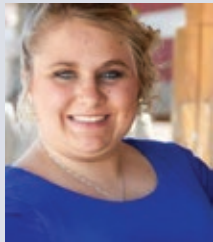
James Head
Van Alstyne
Grayson-Collin EC



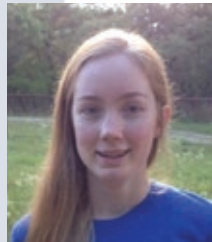
Madeline Horn
Van Alstyne
Grayson-Collin EC



Savanna Chandler
Van Alstyne
Grayson-Collin EC



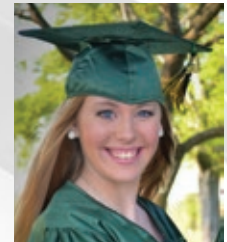
Lauren Chase
Claude
Greenbelt EC



Sydney Vickery
Sequin
Guadalupe Valley EC



Conner Zacharias
Oglesby
Heart of Texas EC



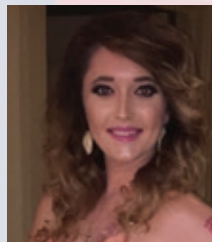
Cortini Ashcroft
Temple
Heart of Texas EC



Mason Richters
WHITNEY
HILCO



Cayleigh Moore
Lovelady
Houston County EC



Cierra Roby
Silsbee
Jasper Newton EC



Sydney Janysek
Hobson
Karnes EC



Kerrigan Kelton
College Station
Mid-South Synergy



Logan Godino
Canadian
North Plains EC



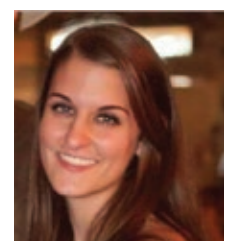
Clinton Aldes
Bellville
San Bernard EC



Andi Kate McMillin
Shallowater
South Plains EC



Matthew Rinnie
Tulia
Swisher EC



McKenna Early
Bridgeport
Wise EC

Annual Meeting Highlights

We Hope You Will Join Us in Austin!

Monday–Wednesday, August 7–9

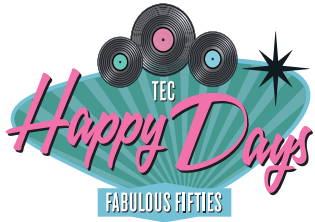
- Visit and support TREWA activities and TEC Showcase
- Enjoy the sights and sounds (and tastes and shopping) of Austin.

Tuesday, August 8

7:00 a.m. **TEC Membership Breakfast Buffet**

10:00 a.m. **TREWA Membership Meeting and Spouse Program**
Never Give Up—The Survivor Way
Holly Hoffman, CBS Survivor
Nicaragua

11:30 a.m. **Rural Friends/ACRE Membership Luncheon**



6:00 p.m. **Happy Days Reception, Dinner and Entertainment**
Join us for cocktails, dinner, entertainment, prizes and more as we revisit the fabulous '50s.

All Day **Visit the Touchstone Energy Recharge Zone**

Charge your electronics, learn more about Touchstone Energy and see the indoor cold-air balloon.



Wednesday, August 9

10:20 a.m. **In the Blink of an Eye**

For more than 20 years, Tony Crow worked for TXU, attending numerous safety meetings. The safety rules were so ingrained that he instinctively followed them, and they became second nature.



But on February 15, 2003, while enjoying his favorite hobby, quail hunting, Tony was accidentally shot and totally blinded for life. His life, and that of his family, drastically changed that day.

Hear Tony's story and his thoughts on safety as well as leadership in the workplace, at home and through everyday life.

Meet Holly Hoffman

Making one audition tape, applying one time, having one casting call, when most people have to apply at least five times, (Jane from our season applied 17 times), I truly believe that there was a reason that I was put on Survivor; not only to make myself better, but also to share my story with others so they can better themselves, as well.



What I was able to take away from "Survivor" is that it wasn't just surviving on a reality show that matters but how we survive in the real world. I have learned that a true survivor is someone who is battling cancer, who has lost a loved one, who has lost their home in a fire or flood, or someone with any adversity who perseveres; because it's really how we survive hardships in our lives, that once you get through them, you are a stronger person.

Some reality stars better themselves, and some don't. Fortunately, this experience has changed my life for the better.

Silent Auction & Craft Sale Donation Form

YES! I will donate Craft/Art Item

Name _____

City, State, Zip _____

Item Donated _____

Item Value _____

If you are unable to attend the meeting, please designate someone to bring your item for you.

To send a craft item or make a donation to TREWA, please mail it to Bobbi Byford, Trinity Valley EC, P.O. Box 888, Kaufman, TX 75142. You can also give your craft or silent auction item to any TREWA board member. Again, thank you for your continued support.

Your donated items help provide funds for TREWA scholarships and donations to Rural Friends/ACRE.

2016-17 TREWA Board of Directors

Group 1

Ann Horn

Arts & Crafts

Jasper-Newton EC

(409) 423-2241 ext. 120

ahorn@jnec.com



Group 2

Kendra Markwardt

Historian

HILCO EC

(254) 687-2331 ext. 1145

kmarkwardt@hilco.coop



Group 3

Karen Culpepper

Scholarship Chair

Wise EC

(940) 626-3003

kculpepper@wiseec.com



Group 4

Rachel Ford

Vice-President

Comanche EC

(325) 356-2533

rford@ceca.coop



Group 5

Kathy Shipp

President/Raffles

Lamb County EC

(806) 385-5191

kshipp@lcec.coop



Group 6

Christina Martinez

Membership Chair

Bluebonnet EC

(512) 332-7924

Christina.martinez@bluebonnet.coop



Group 7

Priscilla Burgos

Victoria EC

(361) 573-2428

pburgos@victoria

electric.coop



Holly Gunter

Immediate Past

President

Medina EC

(830) 741-7343

hollyg@medinaec.org



Bobbi Byford

Social Media/

Lamplighter

Trinity Valley EC

(469) 261-9876

bobbi@tvec.coop



Why are you a TREWA Member?

"I am starting my 40th year in the co-op world. I love every aspect of it and all it stands for. My most rewarding experiences have been with the Government-in-Action Youth Tour and serving on the TREWA Board. I strongly believe that molding the youth of our communities will just make us a stronger nation. TREWA donates to the Youth Tour and offers scholarships. TREWA also supports efforts of the Rural Friends/ACRE program, which is needed to keep the co-op business model strong in legislative matters. The women that rotate in and out, serving on the TREWA Board from cooperatives all across Texas, are some of the hardest working women I know. They truly believe in this program, and it shows through the contributions we are able to make to these programs. I love co-ops, and I love TREWA!" ~Kathy Shipp, TREWA President

TREWA Membership

Current memberships expire July 31, 2017.

TREWA MEMBERSHIP FORM

Membership valid August 1, 2017, through July 31, 2018.

Membership: Renewal New Member

Membership Fees

Please check the appropriate dues assessments:

\$10 (1 year) \$20 (2 years)

First name _____

Last name _____

Address _____

City _____

State _____ ZIP _____

Home phone _____

Work phone _____

Email _____

Cooperative (spell out) _____

Relationship to cooperative:

Employee Director Member
 Spouse of Employee Spouse of Director Other

Return to:

Mail: TREWA
Christina Martinez
Membership Chair
1122 Colorado St., 24th Floor
Austin, TX 78701

Email: christina.martinez@bluebonnet.coop



The TREWA Board of Directors thanks you for your continued support of this organization.

TREWA membership is open to men and women of rural electric cooperatives. We encourage you to become a part of our growing organization as we continue to light the lamp of knowledge for the future.

Membership has its privileges. The children of TREWA members are eligible to apply for scholarships sponsored by TREWA. Members also receive an edition of The Lamplighter, which is sent twice a year via email.

Regular membership price is \$10 per year and, to date, we have almost 1,000 members. Once again, TREWA is offering membership at \$5 per person to cooperatives that enroll 100 percent of their directors, directors' spouses and employees (or spouse of an employee). We would like to acknowledge and thank the cooperatives that currently have 100 percent membership:

- Comanche EC, Group 4
- CoServ Electric, Group 3
- Heart of Texas EC, Group 2
- Houston County EC, Group 1
- Tri-County EC, Group 3

Renew your membership today by completing and returning the form at right. TREWA membership forms are also available at trewa.org.